

# CO.SI.ME.

EQUIPMENT FOR ATEX





**GAS**

**II2G Ex d IIB+H<sub>2</sub> T6 ÷ T4**

**\* IP65/IP66**

**Zone 1 - Zone 21 - Zone 2 - Zone 22**

**DUST**

**II2D Ex tD A21 T80°C ÷ T130°C**

**\* IP65/IP66**

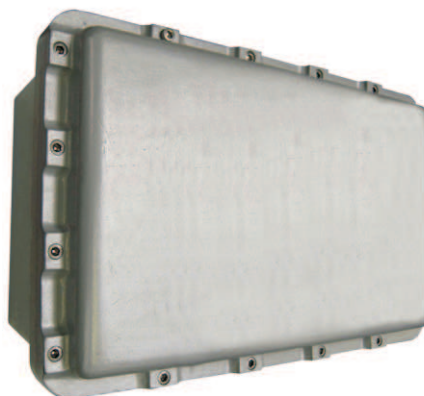
**❄️ -20°C ÷ ☀️ +40°C**

**❄️ -20°C + ☀️ +60°C**

Materiale : Corpo e coperchio di lega leggera  
 Parte trasparente : Vetro temperato  
 Installazione : con staffe in acciaio zincato a richiesta  
 Viteria : Acciaio zincato a richiesta inox  
 Guarnizioni : a richiesta al silicone per IP 66  
 Suffisso A : Per montaggio elementi a coperchio

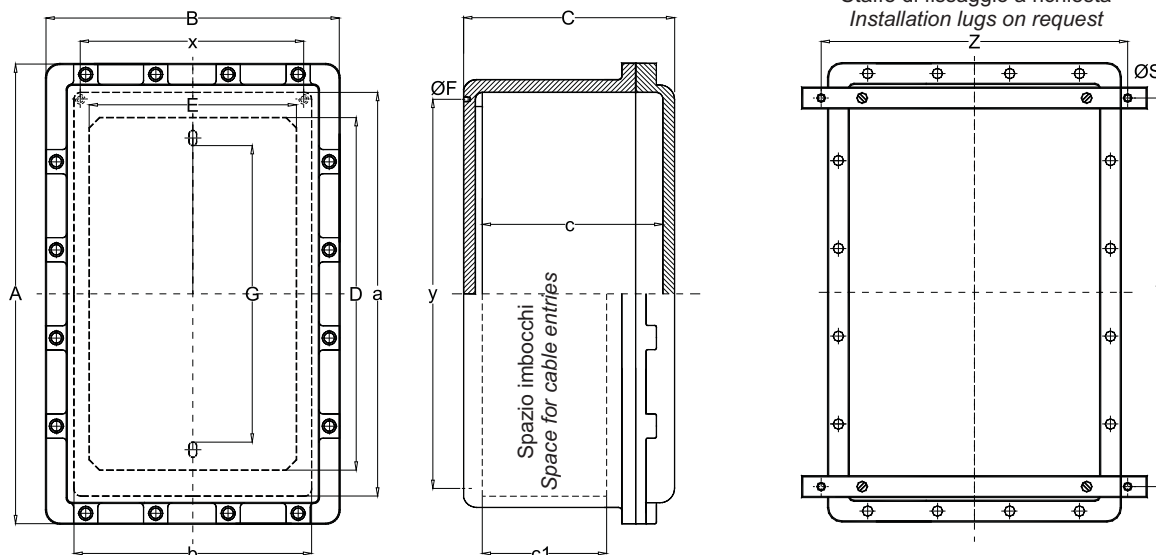
Material : *Light alloy cover and body*  
 Transparent part : *Tempered glass*  
 Installation : *Galvanized steel lugs on demand*  
 Hardware : *galvanized steel or stainless steel*  
 Gaskets : *on demand silicon for IP 66*  
 A suffix : *for installation of components on cover*

\* IP65 con grasso al silicone - IP66 con guarnizione  
 IP65 with silicon grease - IP66 with silicon gasket



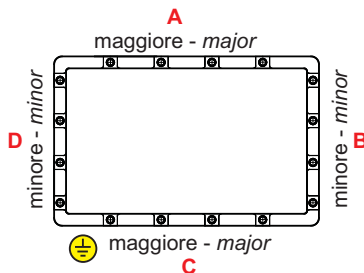
Codice Code	A	B	C	a	b	c	c1	x	y	Z	ØF	ØS	Staffe Lugs	Piastra Frame	D	E	G	Viti coperchio Cover screws	Peso Weight [kg]
EJB 544	175	150	120	103	104	91	-	94	120	150	M5	6	PS 54	PF 54	123	85	87	N°6 M5x20	2,400
EJB 544A	175	150	120	103	104	91	-	94	120	150	M5	6	PS 54	PF 54	123	85	87	N°6 M5x20	2,400
EJB 544T	175	150	120	103	104	91	50	94	120	150	M5	6	PS 54	PF 54	123	85	87	N°6 M5x20	2,770
EJB 544TA	175	150	120	103	104	91	50	94	120	150	M5	6	PS 54	PF 54	123	85	87	N°6 M5x20	2,770
EJB 755	212	175	140	164	125	116	-	100	140	175	M6	7	PS 75	PF 75	156	105	121	N°6 M6x20	3,700
EJB 755A	212	175	140	164	125	116	-	100	140	175	M6	7	PS 75	PF 75	156	105	121	N°6 M6x20	4,200
EJB 755T	212	175	140	164	125	116	70	100	140	175	M6	7	PS 75	PF 75	156	105	121	N°6 M6x20	4,300
EJB 755TA	212	175	140	164	125	116	70	100	140	175	M6	7	PS 75	PF 75	156	105	121	N°6 M6x20	4,700
EJB 1076	305	206	157	252	154	127	86	132	224	205	M6	7	PS 107	PF 107	233	130	201	N°10 M6x25	8,000
EJB 1076A	305	206	157	252	154	127	86	132	224	205	M6	7	PS 107	PF 107	233	130	201	N°10 M6x25	8,500
EJB 1286	370	265	200	306	203	158	92	163	280	255	M8	9	PS 128	PF 128	296	170	254	N°10 M8x30	13,000
EJB 1286A	370	265	200	306	203	158	92	163	280	255	M8	9	PS 128	PF 128	296	170	254	N°10 M8x30	14,500
EJB 14107	450	307	206	375	232	169	110	198	339	285	M8	9	PS 1410	PF 1410	362	200	320	N°12 M8x35	18,000
EJB 14107A	450	307	206	375	232	169	110	198	339	285	M8	9	PS 1410	PF 1410	362	200	320	N°12 M8x35	19,500
EJB 17129B	545	373	206	456	288	156	88	285	450	345	M10	11	PS 1712	PF 1712	425	245	368	N°14 M10x40	35,000
EJB 17129BA	545	373	206	456	288	156	88	285	450	345	M10	11	PS 1712	PF 1712	425	245	368	N°14 M10x40	37,000
EJB 17129	545	373	295	456	288	245	180	282	450	345	M10	11	PS 1712	PF 1712	425	245	368	N°14 M10x40	28,500
EJB 17129A	545	373	295	456	288	245	180	282	450	345	M10	11	PS 1712	PF 1712	425	245	368	N°14 M10x40	30,500
EJB 221410	665	425	320	583	344	260	180	315	550	405	M10	11	PS 2214	PF 2214	555	300	498	N°16 M10x40	47,000
EJB 221410A	665	425	305	583	344	250	180	315	550	405	M10	11	PS 2214	PF 2214	555	300	498	N°16 M10x40	48,000
EJB 2886	770	271	220	702	203	170	110	183	632	255	M8	9	PS 128	PF 288	685	170	642	N°18 M8x30	27,000

Staffe di fissaggio a richiesta  
 Installation lugs on request



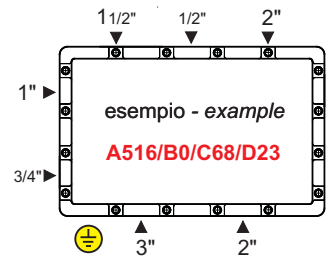
**SCHEMA DI FORATURA PER INGRESSO CON RACCORDO A TRE PEZZI E GIUNTO DI BLOCCAGGIO**  
**DRILL ARRANGEMENT FOR ENTRY BY UNION AND SEALED JOINT**

Codice/Code	schema arrangement	lato side	1/2" M20x1.5	3/4" M25x1.5	1" M32x1.5	1 1/4" M40x1.5	1 1/2" M50x1.5	2" M63x1.5	2 1/2" M75x1.5	3" M90x1.5	4"
EJB 544/EJB 544A		maggiore - major minore - minor	- -	1 1	1 1	- -	- -	- -	- -	- -	- -
EJB 544T/EJB 544TA	libero free	maggiore - major minore - minor	3 2	3 2	2 2	1 1	- -	- -	- -	- -	- -
EJB 755/EJB 755A		maggiore - major minore - minor	1 1	1 1	1 1	1 1	1 1	- -	- -	- -	- -
EJB 755T/EJB 755TA	libero free	maggiore - major minore - minor	4 3	3 2	3 2	2 1	2 1	- -	- -	- -	- -
EJB 1076/EJB 1076A	libero free	maggiore - major minore - minor	6 4	5 3	4 3	4 2	3 2	3 2	- -	- -	- -
EJB 1286/EJB 1286A	libero free	maggiore - major minore - minor	7 5	6 4	5 3	4 3	4 3	3 2	2 2	- -	- -
EJB 14107/EJB 14107A	libero free	maggiore - major minore - minor	8 5	7 5	6 4	5 3	5 3	4 2	3 2	3 2	- -
EJB 17129/EJB 17129A	libero free	maggiore - major minore - minor	10 6	9 6	8 5	7 4	6 4	5 3	4 2	3 2	2 1
EJB 17129B/EJB 17129BA	libero free	maggiore - major minore - minor	10 6	9 6	7 5	6 4	6 4	5 3	- -	- -	- -
EJB 221410/EJB 221410A	libero free	maggiore - major minore - minor	12 7	11 6	10 6	8 5	8 4	6 4	5 3	4 2	3 2
EJB 2886	libero free	maggiore - major minore - minor	15 4	14 4	12 3	9 3	9 3	7 2	6 2	- -	- -



IMBOCCO - HUB Gk									
Codice - Code	1	2	3	4	5	6	7	8	9
Gk	1/2	3/4	1	1 1/4	1 1/2	2	2 1/2	3	4

IMBOCCO-HUB METRICAL x 1.5									
Codice - Code	16	20	25	32	40	50	63	75	90
Metrical	M16	M20	M25	M32	M40	M50	M63	M75	M90



**SCHEMA DI FORATURA PER INGRESSO CON PRESSACAVO**  
**DRILL ARRANGEMENT FOR ENTRY BY CABLE GLAND**

Codice/Code	schema arrangement	lato side	1/2" M20x1.5	3/4" M25x1.5	1" M32x1.5	1 1/4" M40x1.5	1 1/2" M50x1.5	2" M63x1.5	2 1/2" M75x1.5	3" M90x1.5	4"
EJB 544/EJB 544A		maggiore - major minore - minor	- -	1 1	1 1	- -	- -	- -	- -	- -	- -
EJB 544T/EJB 544TA	libero free	maggiore - major minore - minor	3 2	2 2	2 2	1 1	- -	- -	- -	- -	- -
EJB 755/EJB 755A		maggiore - major minore - minor	1 1	1 1	1 1	1 1	1 1	- -	- -	- -	- -
EJB 755T/EJB 755TA	libero free	maggiore - major minore - minor	4 3	3 2	3 2	2 1	2 1	- -	- -	- -	- -
EJB 1076/EJB 1076A	libero free	maggiore - major minore - minor	8 5	6 4	4 3	4 2	3 2	3 2	- -	- -	- -
EJB 1286/EJB 1286A	libero free	maggiore - major minore - minor	10 6	8 5	6 4	4 3	4 3	3 2	2 2	- -	- -
EJB 14107/EJB 14107A	libero free	maggiore - major minore - minor	14 8	12 7	10 6	5 3	5 3	4 2	3 2	3 2	- -
EJB 17129/EJB 17129A	libero free	maggiore - major minore - minor	18 12	16 10	14 8	12 8	12 8	6 4	4 2	3 2	2 1
EJB 17129B/EJB 17129BA	libero free	maggiore - major minore - minor	14 8	10 7	8 5	6 4	6 4	5 3	- -	- -	- -
EJB 221410/EJB 221410A	libero free	maggiore - major minore - minor	22 14	18 12	16 10	14 8	14 8	9 5	5 3	4 2	3 2
EJB 2886	libero free	maggiore - major minore - minor	26 6	22 5	18 4	10 3	9 3	8 2	6 2	- -	- -



<b>GAS</b>	<b>II2G Ex d IIB+H<sub>2</sub> T6 ÷ T4</b>	<b>*IP65/IP66</b>	<b>Zone 1 - Zone 21 - Zone 2 - Zone 22</b>
<b>DUST</b>	<b>II2D Ex tD A21 T80°C ÷ T130°C</b>	<b>*IP65/IP66</b>	<b>❄️-20°C ÷ ☀️+40°C    ❄️-20°C + ☀️+60°C</b>

Codice/Code	Corrente Current [A]	Potenza max. dissipabile Max. power dissipable [W]	Classe temp. Temp. class @ +40°C	Max. temp superfic. Max. surface temp @ +40°C	Classe di temp. Temp. class @ +60°C	Max. temp superfic. Max. surface temp @ +60°C
EJB 544..	63	20	T6	T 80°C	T5	T 95°C
EJB 755..	160	30	T6	T 80°C	T5	T 95°C
EJB 1076..	250	45	T6	T 80°C	T5	T 95°C
EJB 1286..	300	60	T6	T 80°C	T5	T 95°C
EJB 14107..	450	85	T6	T 80°C	T5	T 95°C
EJB 17129B..	630	140	T6	T 80°C	T5	T 95°C
EJB 17129..	630	120	T6	T 80°C	T5	T 95°C
EJB 221410..	800	200	T6	T 80°C	T5	T 95°C
EJB 2886	500	125	T6	T 80°C	T5	T 95°C

Codice/Code	Corrente Current [A]	Potenza max. dissipabile Max. power dissipable [W]	Classe temp. Temp. class @ +40°C	Max. temp superfic. Max. surface temp @ +40°C	Classe di temp. Temp. class @ +60°C	Max. temp superfic. Max. surface temp @ +60°C
EJB 544..	63	45	T5	T 95°C	T4	T 130°C
EJB 755..	160	75	T5	T 95°C	T4	T 130°C
EJB 1076..	250	100	T5	T 95°C	T4	T 130°C
EJB 1286..	300	130	T5	T 95°C	T4	T 130°C
EJB 14107..	450	180	T5	T 95°C	T4	T 130°C
EJB 17129B..	630	290	T5	T 95°C	T4	T 130°C
EJB 17129..	630	250	T5	T 95°C	T4	T 130°C
EJB 221410..	800	410	T5	T 95°C	T4	T 130°C
EJB 2886	500	260	T5	T 95°C	T4	T 130°C

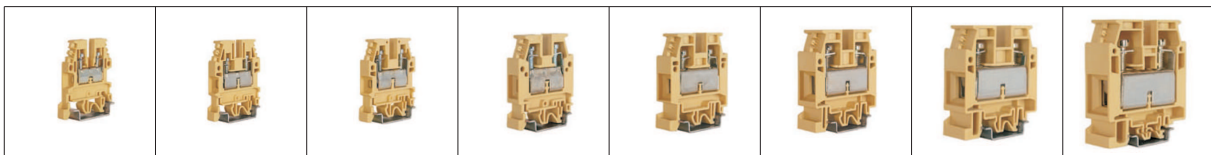
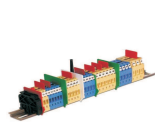


Materiale: Poliammide  
Tensione nominale: MCB2 - 690 [V]  
MCBD 4 ÷ MCB2 70 - 1000 [V]

Materiale: Polyamide  
Rated voltage: MCB2 - 690 [V]  
MCBD 4 ÷ MCB2 70 - 1000 [V]

(\*) Capacità di connessione con conduttore flessibile  
Connection capacity with multi core flexible conductor

Codice/Code CO.SI.ME.	Codice/Code CABUR	Sect. nom. [mm <sup>2</sup> ]	[mm <sup>2</sup> ]*	Current [A]
MCBD 2	CBD 2	2.5	0.5 ÷ 4	29
MCBD 4	CBD 4	4	0.5 ÷ 6	40
MCBD 6	CBD 6	6	0.5 ÷ 10	58
MCBD 10	CBD 10	10	0.5 ÷ 16	77
MCBD 16	CBD 16	16	0.5 ÷ 25	104
MCBD 35	CBD 35	35	0.5 ÷ 50	147
MCBD 50	CBD 50	50	1.5 ÷ 70	180
MCBD 70	CBD 70	70	1.5 ÷ 95	250



Sezione nominale morsetto [mm<sup>2</sup>] - Rated terminal section [mm<sup>2</sup>]

Codice/Code	2.5		4		6		10		16		35		50		70	
EJB 544..	12	-	10	-	8	-	7	-	5	-	-	-	-	-	-	-
EJB 755..	19	-	16	-	13	-	10	-	8	-	-	-	-	-	-	-
EJB 1076..	33	66	28	56	23	46	18	36	15	-	-	-	-	-	-	-
EJB 1286..	43	86	36	72	29	58	23	46	19	38	14	-	13	-	11	-
EJB 14107..	55	110	46	92	37	74	30	60	25	50	18	36	16	-	14	-
EJB 17129..	63	126	54	108	43	86	35	70	29	58	21	42	19	-	17	-
EJB 221410..	87	174	74	148	60	120	48	96	40	80	30	60	26	52	23	-
EJB 2886..	113	226	96	192	78	156	62	124	52	104	39	78	34	-	30	-



**GAS**

**IIG Ex d IIB+H<sub>2</sub> T6 ÷ T5**

**\*IP65/IP66**

**Zone 1 - Zone 21 - Zone 2 - Zone 22**

**DUST**

**IIGD Ex tD A21 T80°C ÷ T95°C**

**\*IP65/IP66**

**☀-20°C ÷ ☀+40°C**

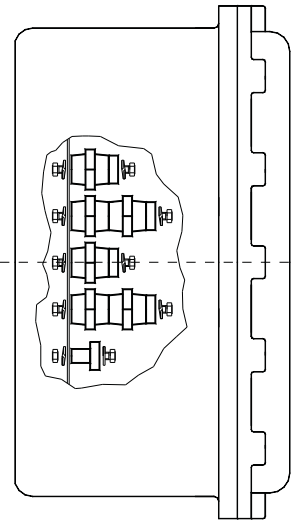
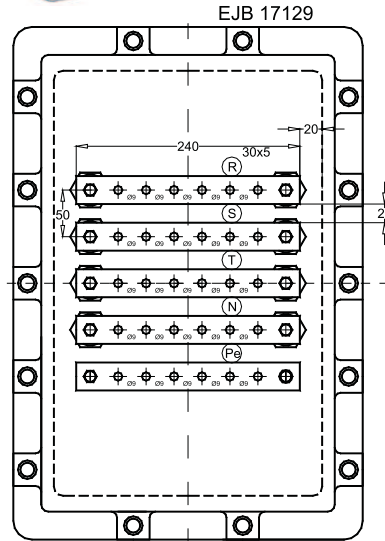
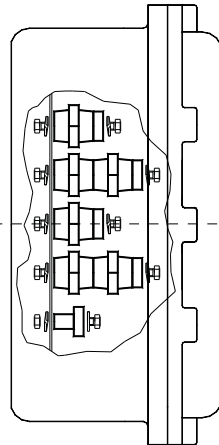
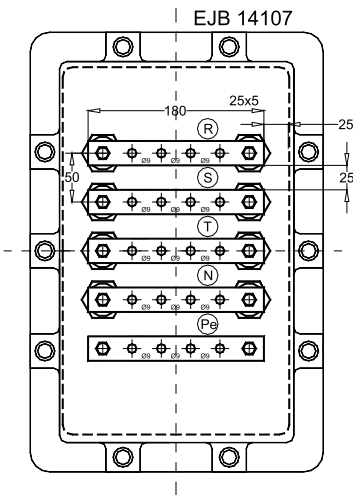
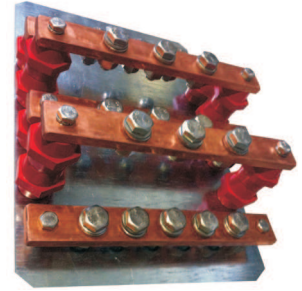
**☀-20°C ÷ ☀+60°C**

Materiale isolatori : Poliestere senza alogenuri, V0 - UL94

Materiale sbarre : Rame

Insulator material : Polyester halogen free, V0 - UL94

Bus bar material : Copper



sezione sbarra bar section [mm <sup>2</sup> ]	H min. [mm] isolatore insulator	L max - lcc 23 kA interasse fissaggio mounting distance [mm]	L max - lcc 30 kA interasse fissaggio mounting distance [mm]	L max - lcc 39 kA interasse fissaggio mounting distance [mm]	L max - lcc 52 kA interasse fissaggio mounting distance [mm]	Corrente nominale Rated current [A]
15 x 5	40	275	160	-	-	220
20 x 5	40	325	175	-	-	280
25 x 5	40	350	200	125	-	330
30 x 5	40	375	225	135	-	410
50 x 5	45	-	350	200	110	600

